



# GMT MONTHLY MEMBERSHIP PROGRESS REPORT

Results as of: 5/31/2020

Multiple District 301

LOCATION: PHILIPPINES

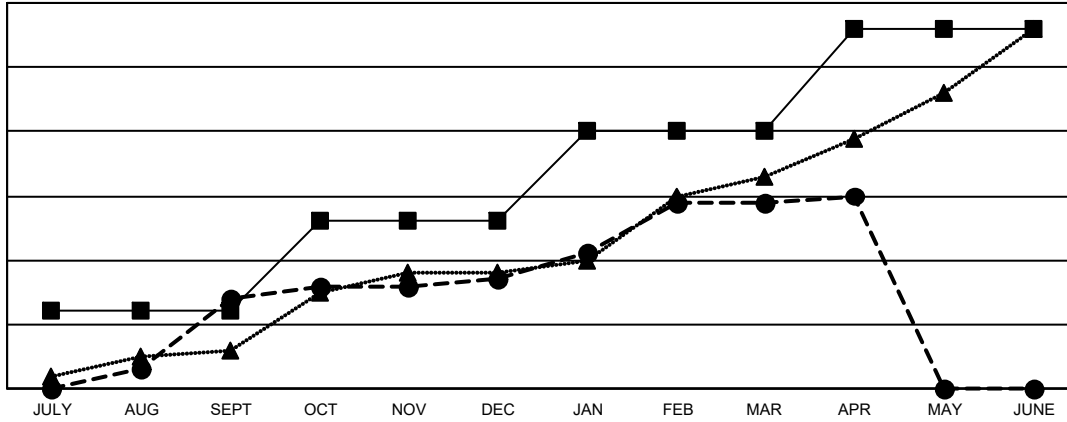
GMT: OPEN

GMT CA 5 - E

| Clubs                 |               |           |               |
|-----------------------|---------------|-----------|---------------|
| RESULTS FOR 2019-2020 |               |           |               |
| QUARTER               | NEW CLUB GOAL | NEW CLUBS | DROPPED CLUBS |
| JULY/AUG/SEPT         | 12            | 14        | 18            |
| OCT/NOV/DEC           | 14            | 3         | 16            |
| JAN/FEB/MAR           | 14            | 12        | 4             |
| APR/MAY/JUNE          | 16            | 1         | 0             |

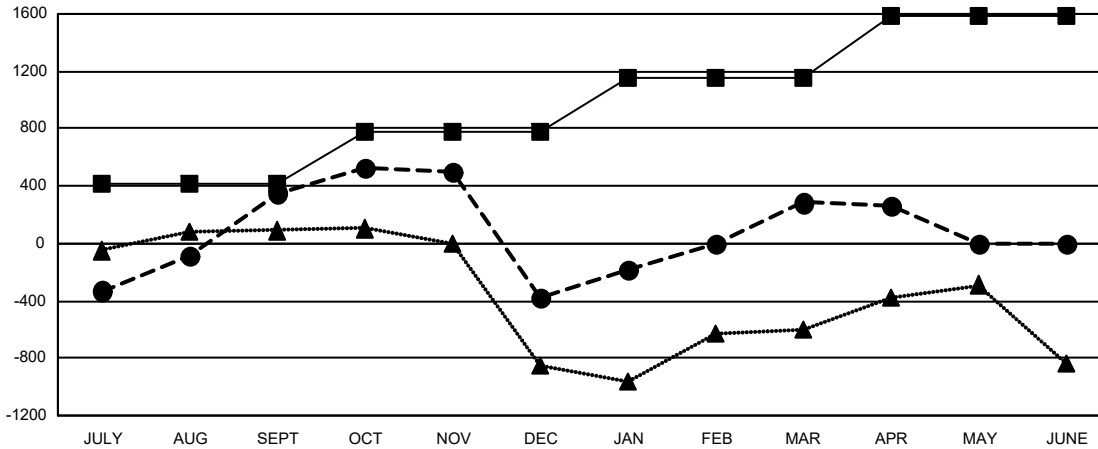
| Members               |                        |                      |  |
|-----------------------|------------------------|----------------------|--|
| RESULTS FOR 2019-2020 |                        |                      |  |
| QUARTER               | MEMBER GROWTH NET GOAL | MEMBER GROWTH ACTUAL | DROPPED MEMBERS ACTUAL (including transfers) |
| JULY/AUG/SEPT         | 410                    | 1,197                | 757  |
| OCT/NOV/DEC           | 365                    | 640                  | 1,327  |
| JAN/FEB/MAR           | 380                    | 1,631                | 483  |
| APR/MAY/JUNE          | 425                    | 34                   | 57   |

GOALS AND ACTUAL NEW CLUBS CUMULATIVE



- - CURRENT YEAR GOALS FOR NEW CLUBS
- - CURRENT YEAR ACTUAL NEW CLUBS
- ▲ - LAST YEAR ACTUAL NEW CLUBS

GOALS AND ACTUAL MEMBERS CUMULATIVE



- - MEMBER GROWTH NET GOAL
- - MEMBER GROWTH ACTUAL
- ▲ - LAST YEAR MEMBERSHIP ACTUAL

|                        |  |                                 |                |
|------------------------|--|---------------------------------|----------------|
| DROPPED CLUBS: 38      | 336 CLUBS OF 582 ADDED 1 OR MORE NEW MEMBERS | <u>GENDER DISTRIBUTION</u>      |                |
|                        |  | MALE                            | 9,963 (52.78%) |
| <u>DROPPED MEMBERS</u> |  | FEMALE                          | 8,913 (47.22%) |
| DECEASED               | 49   | TOTAL FAMILY UNIT MEMBERS       |                |
| CLUB CANCELLED         | 891  | 6,803                           |                |
| OTHER                  | 1,684  | FAMILY MEMBERS PAYING HALF DUES |                |
| TOTAL                  | 2,624  | 4,200                           |                |

[CLICK HERE FOR CUMULATIVE MEMBERSHIP DATA](#)